

SPEC SHEET + MEASUREMENTS

SPORT-TEK

Sport-Tek® Women's Sport-Wick® Varsity Fleece Full-Zip Hooded Jacket. LST236

Product photo



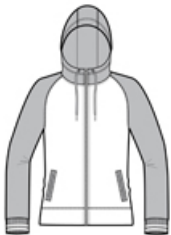
With colorblock raglan sleeves, this varsity-inspired jacket wicks moisture and fights static.

- 5.5-ounce, 100% polyester
- Tag-free label
- Three-panel hood
- Contrast welt pockets
- Self-fabric hood lining
- Taped neck
- Dyed-to-match drawcords with metal tips
- Raglan sleeves
- 2x2 rib knit cuffs with yarn dye stripe
- Contrast welt front pockets
- Self-fabric hem

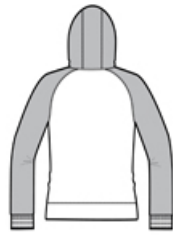
CARE INSTRUCTIONS

Machine wash cold. Do not bleach. Tumble dry low. Cool Iron if necessary. Do not use softener

Sketches



front



back

SPEC SHEET + MEASUREMENTS



Sport-Tek[®] Women's Sport-Wick[®] Varsity Fleece Full-Zip Hooded Jacket. LST236

PRODUCT MEASUREMENTS

	XS	S	M	L	XL	XXL	3XL	4XL
Size	2	4/6	8/10	12/14	16/18	20/22	24/26	28/30
Bust	18 1/4	19 1/4	20 1/4	21 3/4	23 1/4	24 3/4	26 3/4	28 3/4
Body Length at Back	26	26 1/2	27	27 1/2	28	28 1/2	29	29 1/2
Sleeve Length	32	32 1/2	33	33 5/8	34 1/4	34 7/8	35 1/4	35 5/8

Bust: Measured across the chest one inch below armhole when laid flat.

Body Length at Back: Measured from high point shoulder to finished hem at back.

Sleeve Length: Start at center of neck and measure down shoulder, down sleeve to hem.

SIZE CHARTS

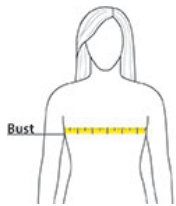
	XS	S	M	L	XL	XXL	3XL	4XL
Size	2	4/6	8/10	12/14	16/18	20/22	24/26	28/30
Bust	32-34	35-36	37-38	39-41	42-44	45-47	48-51	52-55

SPEC SHEET + MEASUREMENTS

SPORT-TEK

Sport-Tek® Women's Sport-Wick® Varsity Fleece Full-Zip Hooded Jacket. LST236

HOW TO MEASURE



BUST

Measure under the arm and around the fullest part of the bust with arms down, keeping tape horizontal.

COLORS



Black/ Dark
Smoke Grey
PMS 425 C



Black/ Deep
Red
PMS 201 C



Black/ Neon
Pink
PMS 806 C



Black/ True
Royal
PMS 7687 C



Dark Smoke
Grey/ Navy
PMS 533 C